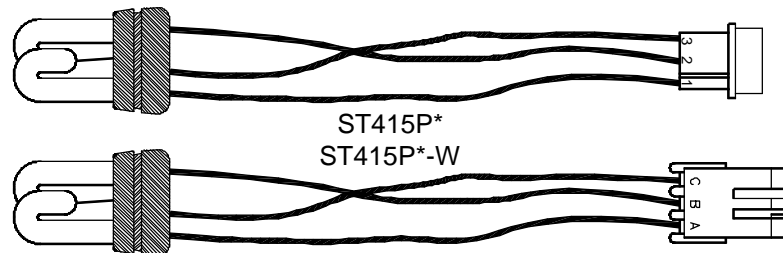


# MODEL ST415P\*

## REMOTE STROBE HEAD INSTALLATION

**Please Note:** These instructions are provided as a general guideline only. Specific mounting, wiring, and/or weather-sealing may be necessary and are the sole responsibility of the installer. The manufacturer assumes no responsibility for the integrity of the installation for this or any of its products.



The ST415P series strobe heads are designed for use as an auxiliary warning light system. They **will not** replace your current headlights or Stop-Tail-Turn lights, but instead will provide an independent, supplementary warning signal.



**WARNING!**

**These are HIGH INTENSITY strobes. DO NOT stare directly into the light while it is on, as momentary blindness and/or permanent eye damage may occur.**



**WARNING!**

**CAUTION:** High voltages exist in electronic strobe lights. Before attempting service on any strobe light, be sure to disconnect the power for at least five minutes to allow the capacitor to discharge. Failure to heed this warning may result in severe electrical shock and/or injury.

**Please Note:** Most strobe and rotating beacon failures can be traced to wiring and battery problems. Before attempting any service on the circuit itself, please be sure to check all connections and wiring to ensure the correct voltage and/or polarity is reaching your light or remote head.



**PROUDLY MADE IN THE USA**  
An ISO 9001:2008 Certified Company



### **SAFETY MESSAGE TO INSTALLERS**

People's lives depend on your safe installation of our products. It is important to read, understand and follow all instructions shipped with our products. In addition, listed below are some other important safety instructions and precautions you should follow:

- To properly install this warning light: you must have a good understanding of automotive electrical procedures and systems, along with proficiency in the installation and use of safety warning equipment.
- When drilling into a vehicle structure, be sure that both sides of the surface are clear of anything that could be damaged.
- DO NOT install equipment or route wiring or cords in the deployment path of an air bag.
- DO NOT attempt to activate the light while driving in a hazardous situation.
- File this instruction sheet in a safe place and refer to it when maintaining and/or reinstalling the product.

Failure to follow all safety precautions and instructions may result in property damage, serious injury, or death to you or others.

## **Star Headlight & Lantern Co., Inc.**

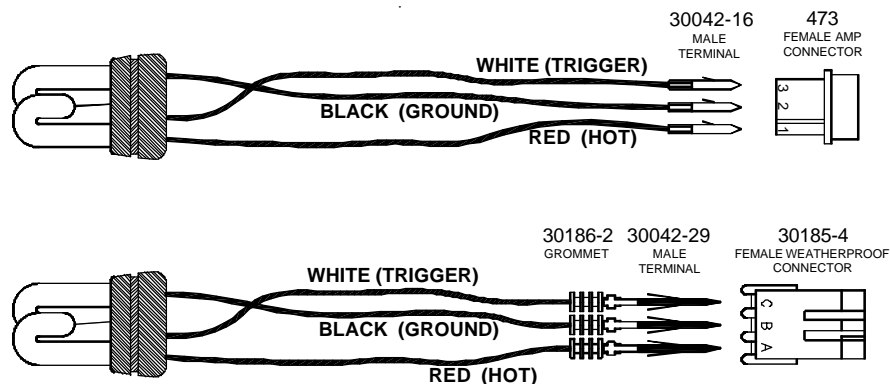
455 Rochester Street Avon, NY 14414

Phone: 585-226-9787 FAX: 888-478-2977



www.starheadlight.com

- The remote strobe head *must* be connected to a power pak to operate. You may use our two-outlet, four-outlet, or six-outlet paks. These heads may *or may not work* with alternate brand power paks. The installer accepts any and all liability if this head is used in conjunction with any unapproved power paks.
- Locate the light housing you wish to install the head into. If necessary, disassemble the light housing on the vehicle such that you can gain access to the back of the reflector.
- Select a location suitable to mount your strobe head. The ideal location is as close to the focal point of the reflector as possible. The strobe head must be located at least 1" from any other lights, the lens, and the lens housing, to allow for adequate heat dissipation.
- After you have checked that both sides of the mounting surface are clear**, drill a 1" hole in the reflector. Be sure to debur both sides of the hole to allow for easier insertion and so that there is a clean, smooth surface for the strobe head to seal against.  
**If you have a double walled housing** (i.e. an outer wall in addition to the inner reflector wall), you will need to drill through both surfaces to properly mount your new strobe head. Using a hole saw, drill a 1 1/4" hole in the outer wall. Once through the outer wall, the pilot drill bit from the hole saw should start the pilot hole in the inner wall. Using the pilot hole for centering, drill a 1" hole in the inner wall. Be sure to de-bur both sides of the hole to allow for easier insertion and so that there is a clean, smooth surface for the strobe head to seal against. It might be necessary to cover the 1 1/4" hole you drilled in the outer wall to prevent contaminants getting inside the housing.
- To insert the strobe head, hold the rubber base with your thumb and forefinger. Slowly twist the base while you push it into the 1" hole. Twisting while pushing helps the cup to slide into the hole easier and helps ensure the lip on the rubber base "pops" into place around the rubber housing.
- Once the strobe head is installed, reassemble the light.
- Attach the enclosed connector to the head by snapping the terminals on each wire into the proper slot. Review the diagram below.

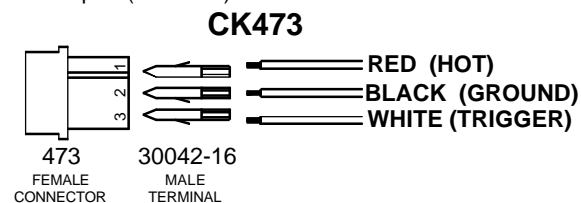


- Once the installation of the heads is complete, connect them to your power pak using the proper cable:

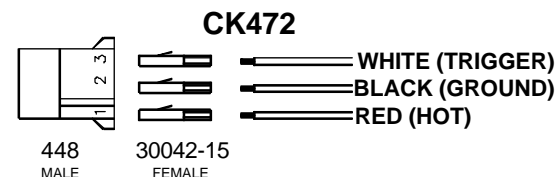
	<b>Amp Connector</b>	<b>Weatherproof Connector</b>
<b>Light Duty Cable</b>	3821	3820
<b>Heavy Duty Cable</b>	N/A	3814
<b>Shielded Cable</b>	4415	N/A

- If you intend to use your own cable, it must meet certain specifications as follows: It must be three-conductor with 600V insulation, minimum 18 AWG for 0-20 ft., 16 AWG for 21-30 ft. or 14 AWG for 31-60 ft. We do not recommend the use of any cable length greater than 60 feet, as the resistance might cause a drop in voltage resulting in inconsistent or complete loss of firing in the heads.

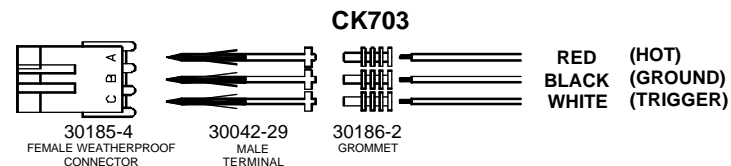
- For good, reliable connections between the cable system and the strobe head in various weather and contamination conditions, it is strongly recommended that a dielectric grease be used on the connectors. It should be applied and into each terminal area where the connectors mate, before joining the two connectors together. We also recommend applying dielectric grease to the back of each connector where the wires enter. We have found this procedure to be effective even under the most extreme of conditions. **Do Not Seal The Connectors Using Silicon Or RTV.**
- If you must remove the white amp connector for any reason, please re-insert the wires back into their proper location. Please refer to the diagram below. If you need to order another amp connector kit, please use part #CK473. This kit contains one connector (473) and three male pins (30042-16).



- If you need to order a white amp connector kit to mate with the CK473 (the connector on your strobe head), please use part #CK472. This kit contains one connector (448) and three female pins (30042-15).



- If you must remove the weatherproof connector for any reason, please re-insert the wires back into their proper location. Please refer to the diagram below. If you need to order another weatherproof connector kit, please use part #CK703. This kit contains one connector (30185-4), three male pins (30042-29), and three rubber seals (30186-2).



- If you need to order a weatherproof connector kit to mate with the CK703 (the connector on your strobe head), please use part #CK702. This kit contains one connector (30185-3), three female pins (30042-30), and three rubber seals (30186-2).

