

# Signal Vehicle Products®

## Star Laser® Lightbars



7400 Series 46" STAR Laser® Lightbar

STAR LASER®



7200 Series 22" STAR Laser® Mini-bar

### Available in FIVE Lengths

7200 Series	22 in.
7300 Series	34 in.
7400 Series	46 in.
7500 Series	52 in.
7600 Series	58 in.
All only 2-5/8 in. tall	

12-1/4 in. wide for maximum visibility

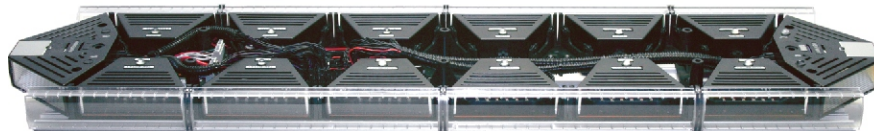
### Innovative Sculptured Design

The STAR LASER® is the newest generation of low-profile lightbars. A blend of innovative modular design, sculptured contours, exceptional strength and durability.

Laser Cage Technology™ is the most advanced, integrated componentry design. STAR LASER® LCT provides the ability for each module to be interchangeable with other modular heads for multiple custom configurations. "ISO-VIBE" modular head design provides circuitry protection and is equipped with plug-n-play electronic connections for smooth adaptation to your needs. Rugged exterior, extruded aluminum bases and UV stabilized polycarbonate lenses provide a lean, more assertive stance to any vehicle form. STAR LASER® provides fail safe operation by utilizing independent driver circuits for each head that allows for synchronization of heads in simultaneous or alternating mode and flash pattern control.

### Additional Options & Specifications

- LED module colors: Amber, Blue, Green, Red, White
- End position can also be color warning light
- Standard mounting kit included
- Vehicle specific mounting straps available
- Front lenses standard clear. Also available in Amber, Blue, Red
- End caps standard clear
- End caps also available in Amber, Blue, Red with optional clear alley light window



PROUDLY MADE IN THE U.S.A.  
An ISO 9001:2008 Certified Company

### End Facing Modular Heads

- End facing modular heads contain two corner positions and one alley light position
- Corner positions can be customized to any combination of modular heads
- StarBurst™ LED Alley light

### Exterior Construction

- Rugged 6063-T6 top and bottom anodized aluminum extrusions
- Optical grade UV stabilized virgin polycarbonate lenses
- Weatherproof seals and stainless steel fasteners
- Ventilation disc attached to bottom allows air exchange without condensation
- Foam filler prevents wind noise and air turbulence at high speeds

### Modular Heads

- M-Tech® LED modular head
- Discrete modular head
- StarBurst™ LED modular head
- HD modular head

### Serviceability

- Top extrusion removes for easy access to modular components
- Front lenses stay securely in place with top removed
- "ISO-VIBE" head design allows serviceability

# Star Headlight & Lantern Co., Inc.

455 Rochester Street Avon, NY 14414

Phone: 585-226-9787 FAX: 888-478-2797



www.starheadlight.com

# Signal Vehicle Products®

## Star Laser® Lightbars

### STAR BURST

---

- (8) Gen 4 LED's
- Patented optical system
- Narrow light distribution
- Compatible with end or front facing heads
- SAE Class I
- Traffic director STT available
- Can be programmed for Takedown/Pursuit



### High Density LED head

---

- 12 LED or 18 LED version available
- High LED count for bid spec. requirements
- Gen 4 LED's
- High efficiency linear optics
- Wide angle light distribution
- Full programmability
- Allows 360° SAE Class I rating with just 4 corner heads



### Discrete

---

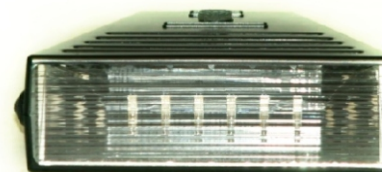
- Gen 1 LED's
- Large image
- Primarily used for traffic directors
- Multiple color traffic directors
- STT available



### M-tech

---

- (6) Gen 4 LED's
- M-tech optical system
- Wide angle light distribution
- Compatible with end or front facing heads
- SAE Class I



# Star Headlight & Lantern Co., Inc.

455 Rochester Street Avon, NY 14414

Phone: 585-226-9787 FAX: 888-478-2797



[www.starheadlight.com](http://www.starheadlight.com)