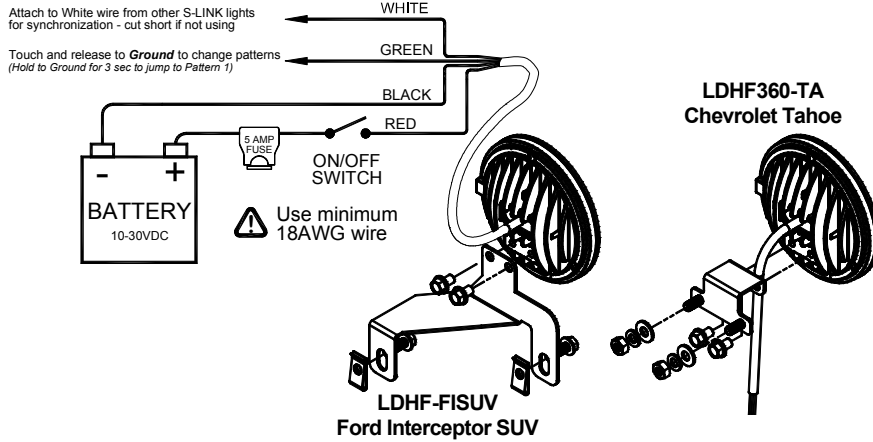


# Par 36 LED Heads

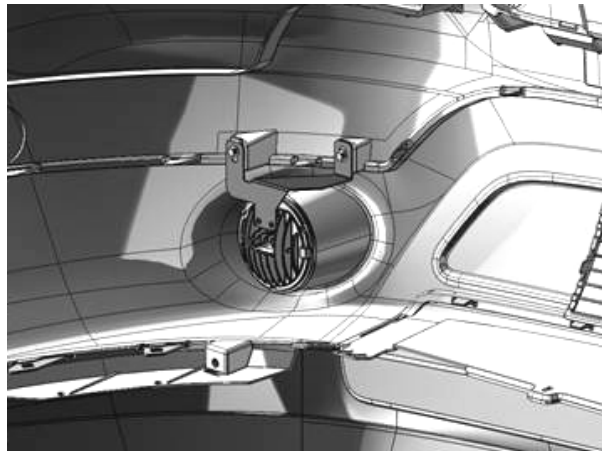
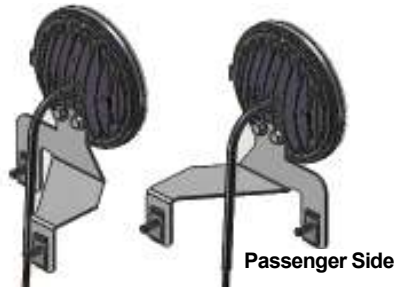
**IMPORTANT:** Please read all of the following instructions before installing your new light. Failure to follow these safety precautions may result in damage to your light or vehicle and may result in serious injury or death to you and your passengers.



Locate the prefab mounting points on the inside of the front bumper (see below) and install the lights using the enclosed hardware.

- The Ford Interceptor mount utilizes different brackets for the driver and passenger side. Review the diagram to the right to identify the proper bracket.
- The Chevy Tahoe brackets are interchangeable with one another.

Driver Side



## Installation Notes

- Installer must have firm knowledge of vehicle electrical systems & emergency equipment. **It is the sole responsibility of the installer to ensure the warning light is secure. The manufacturer assumes no responsibility for the secure mounting of this light.**
- Use only soap and water when cleaning product. Use of other chemicals may discolor lens and/or housing, diminishing light output. Replace discolored lenses immediately!

## Wiring Notes



When wiring your lights, it is recommended that you take the following precautions to reduce any Electromagnetic Interference (EMI).

- Keep LED modules and any radios as far away from each other as possible.
- Separate the radio wires and the LED wires.
- Any excess wires should be cut short.
- The Ground wire, Power wire, and Synchronization wire should be bound tightly together as they run from light to light, through your switchbox, and to the battery.
- Do not ground each unit independently to the chassis. Run the ground for each unit in a "bus" like structure, to the negative terminal on the battery.

**Note:** The total wire length between the two farthest units should be no more than 40 feet.

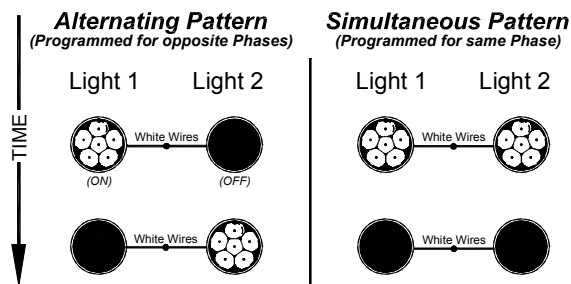
## Pattern Programming and Synchronization




**DO NOT CONNECT WHITE WIRES UNTIL PROGRAMMING HAS BEEN COMPLETED FOR BOTH LIGHTS!!**

1. Power up the first unit and select a Phase 1 pattern. Touch and release the **green wire** to ground to change patterns.
2. Program the second light with the same **Pattern Type**.
  - Lights with the SAME phase flash together (simultaneous).
  - Lights with DIFFERENT phases flash opposite one another (alternate).
3. After programming all lights, tie off the green wires and connect the white wires together.
4. Test lights by applying power to all of them at the same time.

**PLEASE NOTE:** The pattern cycle **does NOT** include the **Steady Burn mode**. To access the Steady Burn pattern, review the **Programming Shortcuts** on the following page.



## Flash Patterns


| Phase 1 Flash Pattern # | Phase 2 Flash Pattern # | Pattern Type | Phase    |  Pattern Description | CPS  | Shortcuts   |
|-------------------------|-------------------------|--------------|----------|---|------|---|
| 1                       | 17                      | K            | 1        | Flicker †   | 1.0  | ←<br>Pattern 1 (Phase 1):<br>3 sec or 1 flash   |
| 2                       | 18                      | L            |          | Fast Doubleflash  | 3.3  |   |
| 3                       | 19                      | M            |          | Tripleflash   | 2.5  |   |
| 4                       | 20                      | N            |          | PSU Flicker   | 0.7  | ←<br>Pattern 17 (Phase 2):<br>9 sec or 3 flashes  |
| 5                       | 21                      | O            |          | PSU Random  | 0.6  |   |
| 6                       | 22                      | F            |          | Quadflash †   | 1.0  | ←<br>Pattern 6 (Phase 1):<br>6 Sec or 2 flash<br><br>Pattern 22 (Phase 2):<br>12 sec or 4 flashes |
| 7                       | 23                      | G            |          | Quadflash w/Post-Pop †  | 1.0  |   |
| 8                       | 24                      | H            |          | Singleflash †   | 1.0  |   |
| 9                       | 25                      | I            |          | Doubleflash †   | 1.0  |   |
| 10                      | 26                      | J            |          | Variable AKA Delta-Omega  | 0.3  |   |
| 11                      | 27                      | C            |          | Fast Quadflash w/Post-Pop   | 1.4  |   |
| 12                      | 28                      | E            |          | Random  | 0.4  |   |
| 13                      | 29                      | A9           |          | Pre-Pop Quintflash  | 1.4  |   |
| 14                      | 30                      | A10          |          | Quadflash Inverted Long On  | 0.31 |   |
| 15                      | 31                      | A11          |          | Quadflash Inverted  | 1.4  |   |
| 16                      | 32                      | N/A          | Non-Sync | Random 57K Type A   | N/A  | ←<br>Pattern 18 (Phase 2):<br>18 sec or 6 flashes   |
| NA                      |                         |              | N/A      | Steady  | NA   |   |

† - Approved patterns for SAE J845 and California Title 13

**Pattern Shortcuts:** Hold Green wire to ground for indicated time.

**Steady Burn:** Not in pattern cycle. Only accessible through shortcut. Hold Green wire to ground for 18 seconds (light will flash 6 times).

**Please Note:** These instructions are provided as a general guideline only. **Some vehicles may require special mounting, wiring, and/or weather-sealing. This is the sole responsibility of the installer.** Star Headlight & Lantern Co., Inc. assumes no responsibility for the integrity of the installation for this or any of its products.



This light utilizes high-intensity LED Lamps. DO NOT stare directly into the light while it is on, as momentary blindness and/or permanent eye damage may occur.

WARNING!

### NOTICE

Due to continuous product improvements, we must reserve the right to change any specifications and information, contained in this manual at any time without notice. Star Headlight & Lantern Co., Inc. makes no warranty of any kind with regard to this manual, including, but not limited to, the implied warranties of merchantability and fitness for a particular purpose. Star Headlight & Lantern Co., Inc. shall not be liable for errors contained herein or for incidental or consequential damages in connection with the furnishing, performance, or use of this manual.

## Service

### LED FIVE YEAR LIMITED WARRANTY

The manufacturer warrants this LED light against factory defects in material and workmanship for five years after the date of purchase. The owner will be responsible for returning to the Service Center any defective item(s) with the transportation costs prepaid. The manufacturer will, without charge, repair or replace *at its option*, products, or part(s), which its inspection determines to be defective. Repaired or replacement item(s) will be returned to the purchaser with transportation costs prepaid from the service point. A copy of the purchaser's receipt must be returned with the defective item(s) in order to qualify for the warranty coverage. Exclusions from this warranty include, but are not limited to, domes, and/or the finish. This warranty shall not apply to any light, which has been altered, such that in the manufacturer's judgment, the performance or reliability has been affected, or if any damage has resulted from abnormal use or service.

There are no warranties expressed or implied (including any warranty of merchantability or fitness), which extend this warranty period. **The loss of use of the product, loss of time, inconvenience, commercial loss or consequential damages, including costs of any labor, are not covered.** The manufacturer reserves the right to change the design of the product without assuming any obligation to modify any product previously manufactured.

This warranty gives you specific legal rights. You might also have additional rights that may vary from state to state. Some states do not allow limitations on how long an implied warranty lasts. Some states do not allow the exclusion or limitation of incidental or consequential damages. Therefore, the above limitation(s) or exclusion(s) may not apply to you.

If you have any questions concerning this or any other product, please contact our **Customer Service Department** at (585) 226-9787.

If a product must be returned for any reason, please contact our Customer Service Department to obtain a Returned Materials Authorization number (RMA #) before you ship the product back.

Please write the RMA # clearly on the package near the mailing label.



PROUDLY MADE IN THE USA  
An ISO 9001:2008 Certified Company



**Star Headlight & Lantern Co., Inc.**

455 Rochester Street

Avon, NY 14414

Phone: 585-226-9787

FAX: 888-478-2797

**STAR**  
WARNING  
SYSTEMS

**STAR**  
SIGNAL  
VEHICLE PRODUCTS

**BRADFORD**  
Vehicle Solutions

[www.starheadlight.com](http://www.starheadlight.com)