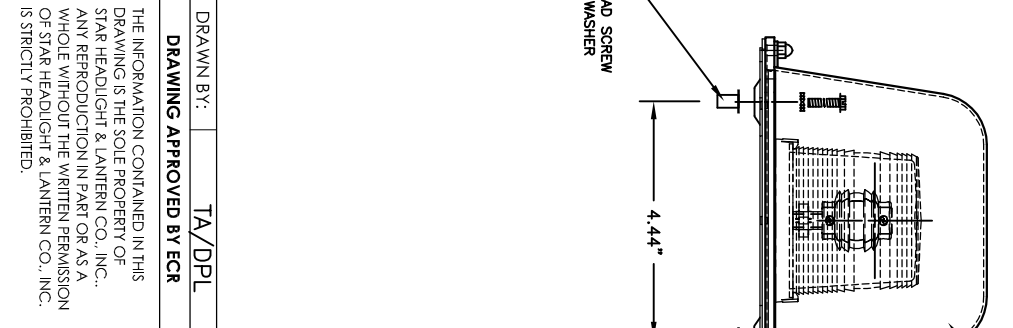
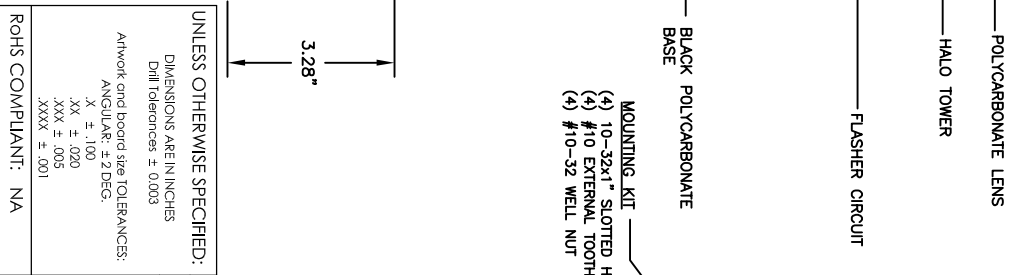
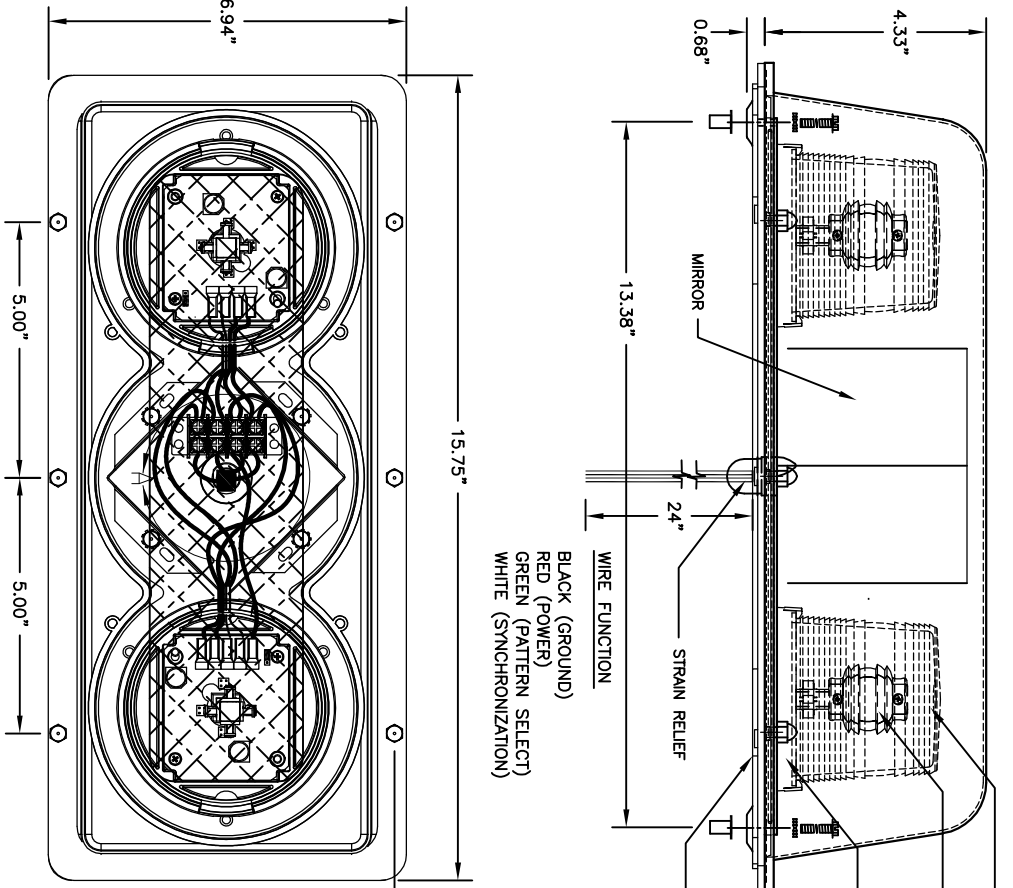


REV.	ECR	DESCRIPTION	DATE
-	12074	INITIAL DRAWING REQUEST	06/30/14

MODELS	OPTIONS						APPROVALS										Electrical Spec.	
	PERM. MOUNT	MAG. MOUNT	VAC. MOUNT	4 LED'S	8 LED'S	HARD WIRE	CHG. PLUG	Amber Outer & Clear liner	Clear Outer & Amber liner	Blue Outer & Clear liner	Clear Outer & Blue liner	Clear	Green Clear	Clear & Green	Red Outer & Clear liner	Clear Outer & Red liner	Voltage	Amp Draw
9200HLV*	X			X		X		SAE W3-1 07	SAE W3-1 07	SAE W3-2 07	SAE W3-2 07	SAE W3-2 07	N/A	N/A	SAE W3-2 07	SAE W3-2 07	10-30VDC	1.2A
9200HLM*		X		X			X	SAE W3-1 07	SAE W3-1 07	SAE W3-2 07	SAE W3-2 07	N/A	N/A	N/A	SAE W3-2 07	SAE W3-2 07	10-16VDC	1.2A
9200HLV*	X			X				SAE W3-1 07	SAE W3-1 07	SAE W3-2 07	SAE W3-2 07	N/A	N/A	N/A	SAE W3-2 07	SAE W3-2 07	10-16VDC	1.2A
9200HLM*		X		X			X	SAE W3-1 07	SAE W3-1 07	SAE W3-2 07	SAE W3-2 07	N/A	N/A	N/A	SAE W3-2 07	SAE W3-2 07	10-30VDC	1.2A
9200H8LV*			X				X	CA TITLE 13	CA TITLE 13	SAE W3-1 07	SAE W3-1 07	N/A	N/A	N/A	CA TITLE 13	CA TITLE 13	10-16VDC	1.2A
9200H8LM*			X				X	CA TITLE 13	CA TITLE 13	SAE W3-1 07	SAE W3-1 07	N/A	N/A	N/A	CA TITLE 13	CA TITLE 13	10-16VDC	1.2A



UNLESS OTHERWISE SPECIFIED:
 DIMENSIONS ARE IN INCHES
 Drill Tolerances ± 0.003
 Arrow and bond size TOLERANCES:
 ANGULAR ± 2 DEG.
 X ± .020
 XX ± .005
 XXX ± .005
 XXXX ± .001

ROHS COMPLIANT: NA

MATERIAL: N/A

FINISH: N/A

DRAWN BY: TA/DPL
DRAWING APPROVED BY ECR

THE INFORMATION CONTAINED IN THIS DRAWING IS THE SOLE PROPERTY OF STAR HEADLIGHT & LANTERN CO., INC. ANY REPRODUCTION IN PART OR AS A WHOLE WITHOUT THE WRITTEN PERMISSION OF STAR HEADLIGHT & LANTERN CO., INC. IS STRICTLY PROHIBITED.

STAR HEADLIGHT & LANTERN CO., INC.
 455 ROCHESTER ST. AVON NY 14414
 Ph: (585) 226-9500 Fax: (585) 226-2029

MODEL: 9200H8LV* (*= A,B,C,G,R) 9200H8LM* (*= A,B,C,G,R)
MODEL: 9200H8LV* (*= A,B,C,G,R)

TITLE: MODEL DRAWING

DWG. NO. 9200H8L
REV -

SCALE: 1:1 DO NOT SCALE FROM DRAWING SHEET 1 OF 2

NOTE:

- 1) INSTRUCTION SHEET: PLT453
- 2) PACKING: UNIT BOX P/N PCART9200UNT 16 x 22 POLY BAG P/N P30024-1 BOX LABEL BLANK P/N PLAB64
- 3) DOME COLORS: A, B, C, G, R
- 4) LENS COLORS: A, B, C, G, R
- 5) Operating Temperature Range: -40C to 55C